
USER MANUAL

ActiveAQUA[®]

HYDRO  CULTURE

DUAL DIAPHRAGM AIR PUMP



AADAP25L

AADAP25L - USER MANUAL

OVERVIEW

Thank you for purchasing the **AADAP25L** Dual Diaphragm Air Pump.

INSTRUCTIONS FOR OPERATION

1. Remove the air pump from the packaging, and the twist tie from the power cord.
2. Gather the necessary 1/4" diameter air tubing and air stone(s) (diffusers).
3. Mount the air pump unit on a stable, dry surface above the water level and near a 120V power source.
4. Connect one end of the air tubing to one of the four air outlets, and the other end of the air tube to the air stone (diffuser).
5. Repeat step 4 with the other three air outlets, if needed. Close the valves on any unused outlets (the valves are closed when fully in the "3:00" or "9:00" positions and are fully open when in the "6:00" position; between those positions is the adjustable range of air pressure).
6. Place the air stone(s) in the desired location(s) of the nutrient reservoir/tank/container where added oxygen supplementation is needed.
7. Plug the power cord of the air pump into a 120V outlet.

SPECIAL NOTES AND INSTRUCTIONS

Ensure that the air pump unit is located above the water level of the reservoir tank being oxygenated. Failure to do so may result in water back flowing through the air tube and damaging the pump. (To eliminate any chance of this, use our Active Aqua 1/4" Air Pump Check Valve, item AAPCV025.)

To adjust air pressure to the available outlets, turn the power adjustment knob located on the top of the unit housing.

⚠ WARNING: DO NOT SUBMERGE. Avoid direct contact with water to the unit or electrical components. Failure to do so may result in electric shock. Prevent pump motor burnout by ensuring adequate air flow around the unit.

TO PREVENT ELECTRICAL SHOCK FROM BACK-SIPHONING, LOCATE THE PUMP ABOVE THE WATER LEVEL.

ALWAYS DISCONNECT POWER BEFORE INSTALLING OR SERVICE.

DO NOT TOUCH THE ELECTRIC SOURCE PLUG WITH WET HANDS.

LOWER HOUSING AND PUMP SURFACES CAN BECOME VERY HOT DURING OPERATION. DO NOT TOUCH THESE SURFACES UNTIL UNIT HAS BEEN SHUT OFF AND ALLOWED TO COOL.

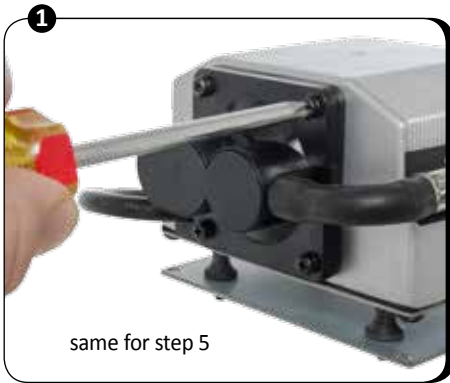
⚠ CAUTION: RISK OF BURSTING - USE ONLY RECOMMENDED AIR-HANDLING PARTS ACCEPTABLE FOR PRESSURES NOT LESS THAN 10PSI.

SPECIFICATIONS

Power:	14.7 Watts
Voltage:	120V/60Hz
Output:	25 L/min
Pressure:	>3.77 psi
Output Pressure:	0.026 kPa
Weight:	4.5 lbs/2.1 kg
Size:	5.6"L x 5.1"W x 3.6"H

TO REPLACE DIAPHRAGMS *(replacement diaphragm kit sold separately - AADARD)*

1. Remove the four screws holding the diaphragm housing to the pump body and gently remove the diaphragm housing.
2. Remove the lock nut that is holding the old diaphragm in position and remove the old diaphragm.
3. Replace the old diaphragm with the new one. (to re-install, complete steps 1 & 2 in reverse)
4. Secure the new diaphragm with the new lock nut and gently tighten it.
5. Replace the diaphragm housing over the new diaphragm and replace the four screws that hold it to the pump body.



WARRANTY



LIMITED WARRANTY

Hydrofarm warrants the **AADAP25L** to be free from defects in materials and workmanship. The warranty term is for one year beginning on the date of purchase. Misuse, abuse, or failure to follow instructions is not covered under this warranty. Hydrofarm's warranty liability extends only to the replacement cost of the product. Hydrofarm will not be liable for any consequential, indirect, or incidental damages of any kind, including lost revenues, lost profits, or other losses in connection with the product. Some states do not allow limitation on how long an implied warranty lasts or the exclusion of incidental or consequential damages, so the above limitations or exclusions may not apply to you. Hydrofarm will, at our discretion, repair or replace the **AADAP25L** covered under this warranty if it is returned to the original place of purchase. To request warranty service, please return the **AADAP25L**, with original sales receipt and original packaging, to your place of purchase. The purchase date is based on your original sales receipt.

GARANTIE LIMITÉE

Hydrofarm garantit que le **AADAP25L** ne présente aucun défaut de pièces et main-d'œuvre. La période de garantie est d'un an à partir de la date d'achat. Une utilisation incorrecte, abusive, ou le non-respect des instructions n'est pas couvert(e) par cette garantie. La responsabilité de la garantie Hydrofarm couvre uniquement le coût de remplacement du produit. Hydrofarm ne pourra être tenu responsable des dommages consécutifs, indirects ou fortuits de tout type, y compris les pertes de revenus, de profits ou autres en rapport avec le produit. Certains états n'autorisent aucune limite concernant la durée de la garantie implicite ou l'exclusion des dommages fortuits ou consécutifs ; les limites ou exclusions mentionnées ci-dessus peuvent donc ne pas être applicables à votre cas. Hydrofarm se réserve le droit de réparer ou remplacer le **AADAP25L** couvert par cette garantie si celui-ci est renvoyé au lieu d'achat d'origine. Pour solliciter le service de garantie, veuillez renvoyer le **AADAP25L** avec sa facture et son emballage d'origine à votre lieu d'achat. La date d'achat est indiquée sur votre facture originale.

GARANTÍA LIMITADA

Hydrofarm garantiza que el **AADAP25L** no presentará defectos de fabricación. La garantía tendrá una duración de un año desde la fecha de compra. En caso de no respetarse estas instrucciones o de un uso inadecuado del producto, la garantía no cubrirá los posibles daños. La cobertura de la garantía ofrecida por Hydrofarm únicamente incluye los costes de sustitución del producto. Hydrofarm no será responsable de ningún daño indirecto, accidental o derivado de ningún tipo, incluyendo pérdidas de ingresos o beneficios, o cualquier otra pérdida relacionada con el producto. En algunos estados no se permiten limitaciones sobre la duración de una garantía implícita o la exclusión de los daños accidentales o derivados; en cuyo caso las limitaciones y exclusiones anteriores no serán de aplicación. Hydrofarm, a su discreción, podrá reparar o sustituir el **AADAP25L** cubierto por esta garantía siempre que se devuelva al lugar original de compra. Para reclamar la garantía, devuelva el **AADAP25L** con el ticket de compra y el embalaje original al lugar de compra. La fecha de compra será la indicada en el ticket original.

AADAP25L Instructions revised - January 27, 2017 11:32 AM